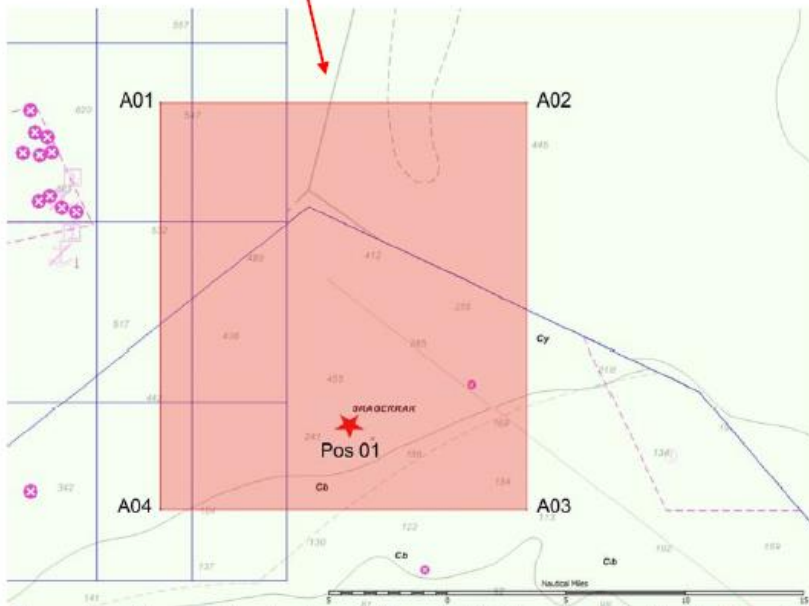


ATTACHMENT I:

Geographical area in which the ship will operate

The maps below show the intended working area for Cruise EMB140 with water depths of about 500 m which is requested for the 75 kHz ADCP tests. RV ELISABETH MANN BORGESE will operate within the red marked box with corners A01, A02, A03 and A04.



Skagerrak working area (above) and zoom of area A with bathymetry (below) and with the deployment position of the two drift Waverider buoys at Pos 01 (LAT 58°06,5'N LON 010°05,0'E)