

FICHE PCR. Preliminary Cruise report

The chief of mission must send this form to the French Oceanographic Fleet, to the address : DFO_campagnes@flotteoceanographique.fr

I - RELATIONS INTERNATIONALES

Rappel :

Article 249 de la Convention internationale des droits de la mer : “ Obligation de satisfaire à certaines conditions ”

Article 249 (b) : “ Fournir à l’Etat côtier, sur sa demande, des rapports préliminaires, aussitôt que possible, ainsi que les résultats et conclusions finales, une fois les recherches terminées. ”

Article 249 (c) : “ S’engager à donner à l’Etat côtier, sur sa demande, accès à tous les échantillons et données obtenus dans le cadre de la recherche scientifique marine, ainsi qu’à lui fournir des données pouvant être reproduites et des échantillons pouvant être fractionnés sans que cela nuise à leur valeur scientifique. ”

Article 249 (d) : “ Fournir à l’Etat côtier, sur sa demande, une évaluation de ces données, échantillons et résultats de recherche, ou l’aider à les évaluer ou à les interpréter. ”

Cruise name/number:	NARVAL 2019
---------------------	-------------

Authorizations:

Coastal State	Authorization Document Number	National Participant(s)
Denmark	JARDFEINGI License 19/00044-2 Note Verbale JTHAV No 2019-28291	/
Iceland	UTN19070120/34,R,431 from the Ministry for Foreign Affairs of Iceland	/
Norway	Licence no 732/2019 from Oljedirektoratet 19/10664 from the Directorate of Fisheries	/

Scientist in charge of reporting:

Name:	Le Moigne Pierre-Yves
Country/Nationality:	France/French
Affiliation:	Shom/GHOA
Address:	BCRM de Brest – CC 61 – 29240 Brest CEDEX 9
Telephone:	+33 (0) 2 98 14 05 51
Email:	gho-hydro-ifremer-d@shom.fr
Website (for CV and photo):	/

Brief description of scientific objective:

The main objective of the campaign NARVAL 2019 is to acquire knowledge of the marine environment in arctic regions. This scientific campaign focuses on the following themes: “Physical Oceanography” and “underwater acoustic”.

In addition, the transits made during the campaign give the opportunity to enhance the bathymetric, the oceanographic and the geophysical knowledge. All these works will also allow updating international marine charts, to improve the safety of navigation in the Norwegian waters.

Update on anticipated dates for delivery of final results:

Metadata:	(locations of stations, variables measured, types of samples)
Raw Data:	Within 6 months after the cruise (hopefully in december 2019)
Processed Data:	Within 6 months after the cruise (hopefully in december 2019)
Data Analysis:	Within 6 months after the cruise (hopefully in december 2019) for Iceland and Denmark (transit data) On request for Norway (Other cruises planned)
WODC Data Registration (if applicable):	Accession number

Append image or URL illustrating the route of the platform, locations where measurements were taken, and actual cruise track:

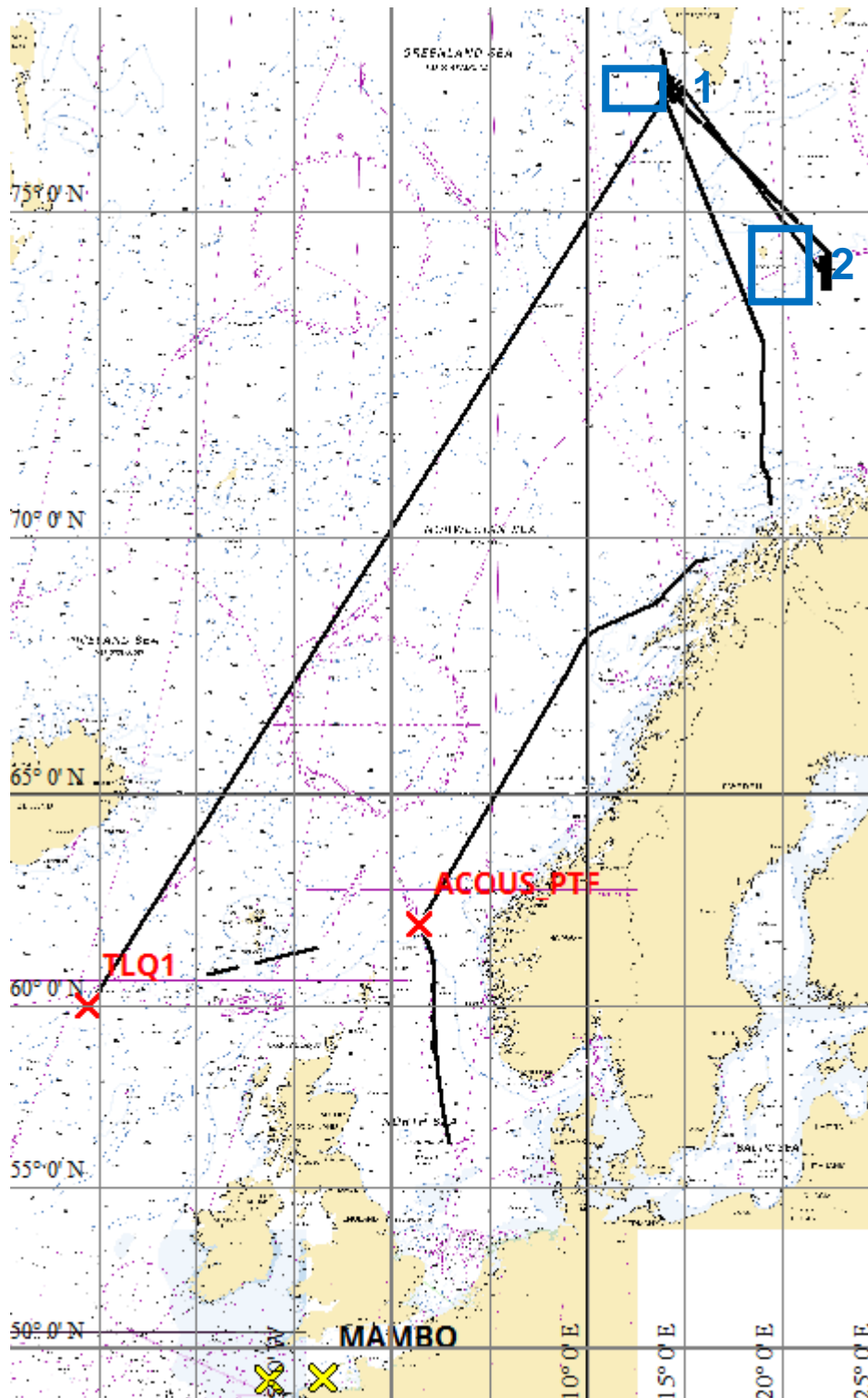


Figure : Global view of NARVAL 2019 cruise. In black : MBES and SUBOP tracks. Yellow crosses : MAMBO moorings. Red crosses : acoustic moorings. Work areas 1 and 2 in blue : see following figures.

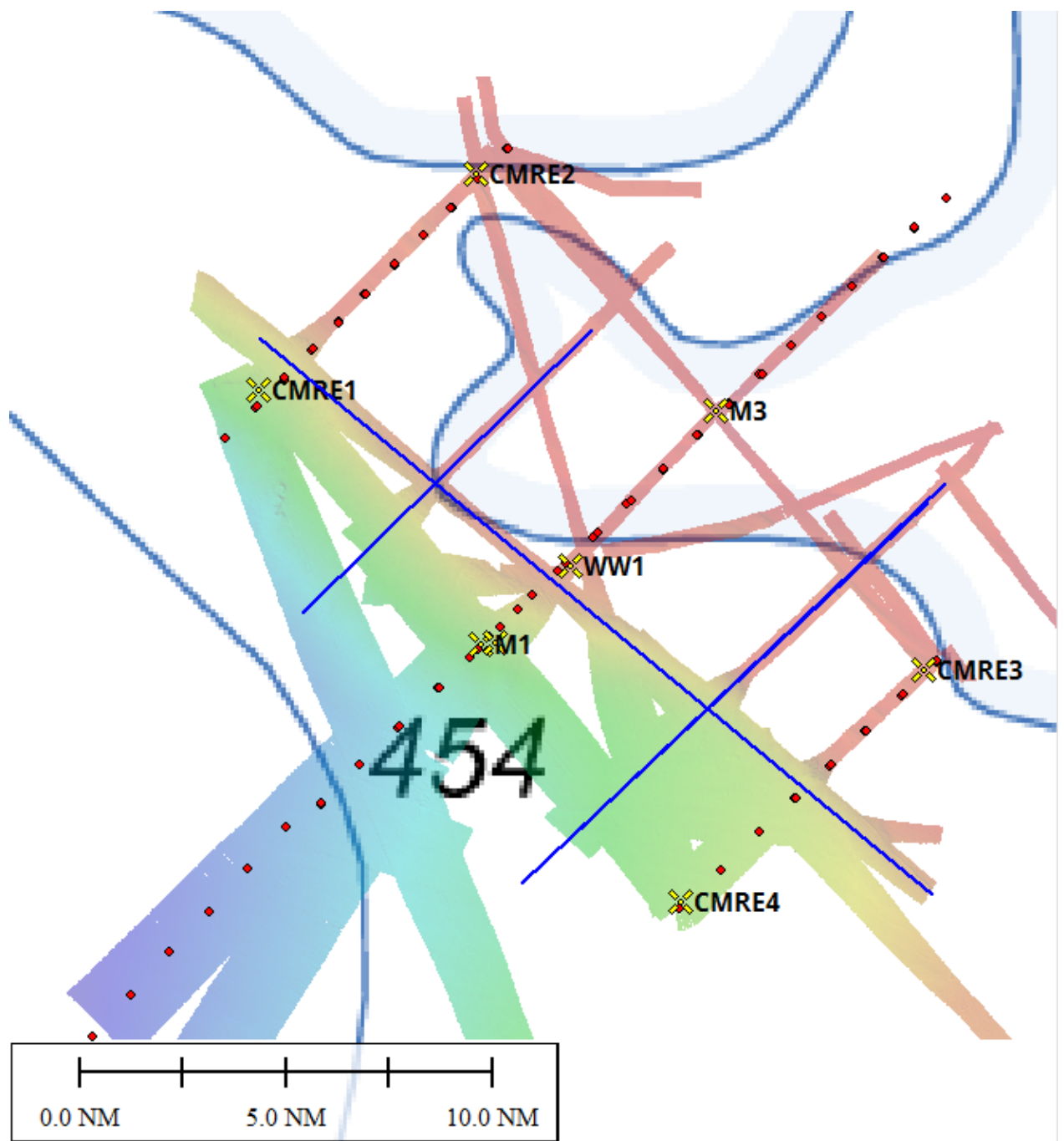


Figure: Oceanographic work near Svalbard – area 1. Red dot represents CTD casts. Yellow crosses represent temporary moorings. Blue lines represent Seasonar (an oceanographic towed fish) profiles.

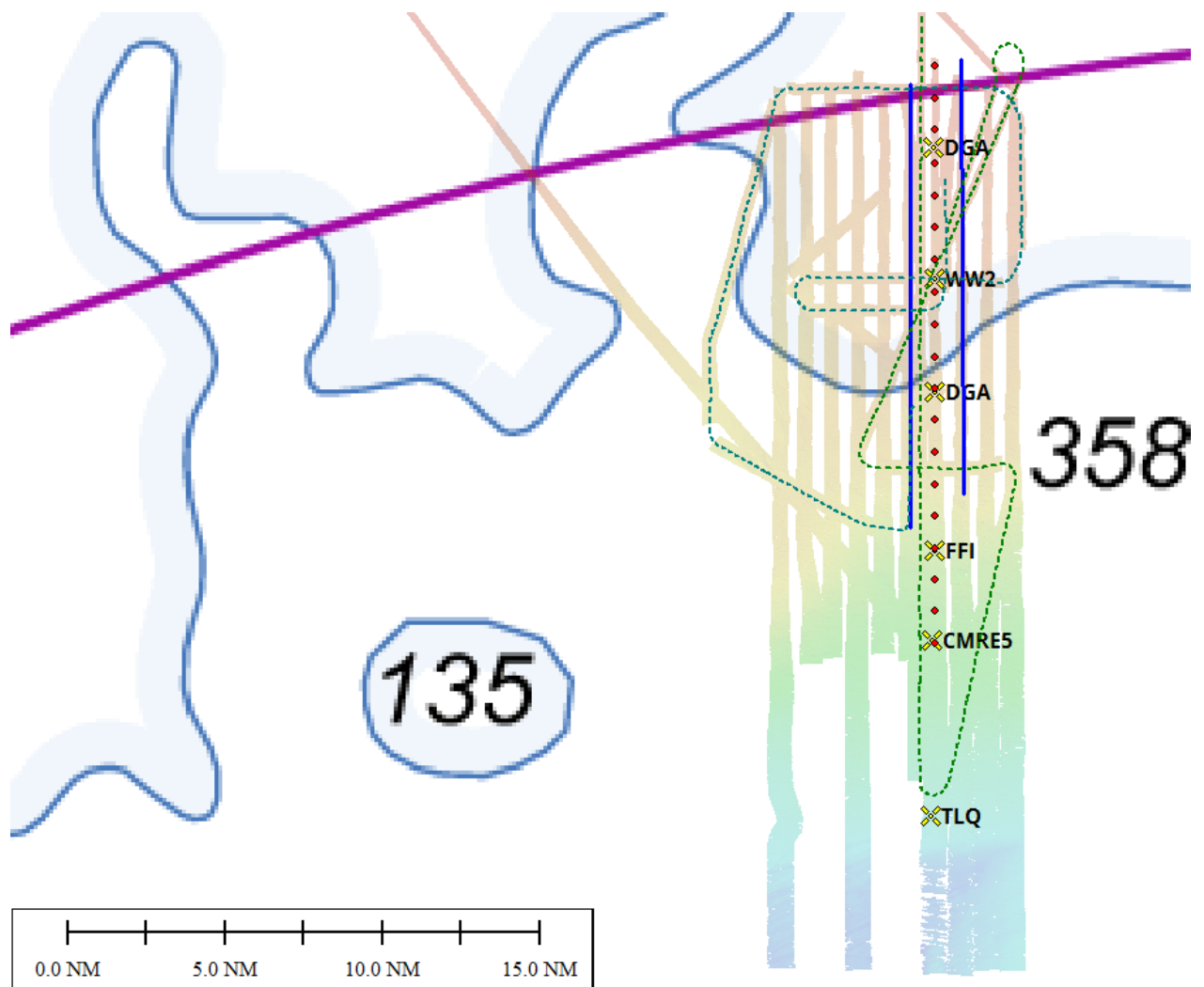


Figure : Oceanographic and acoustic work near Bjornoya – area 2. Red dot represents CTD casts. Yellow crosses represent temporary moorings. Blue lines represent Seasoar profiles. Dashed green lines represent the course of the ship with a towed array of hydrophones.

Réf :
 DRAFT STANDARD FORM C
 Art 249 from UN Convention of law of the sea