

Fig. 1 The planned oceanographic stations grid during AREX2019 expedition.

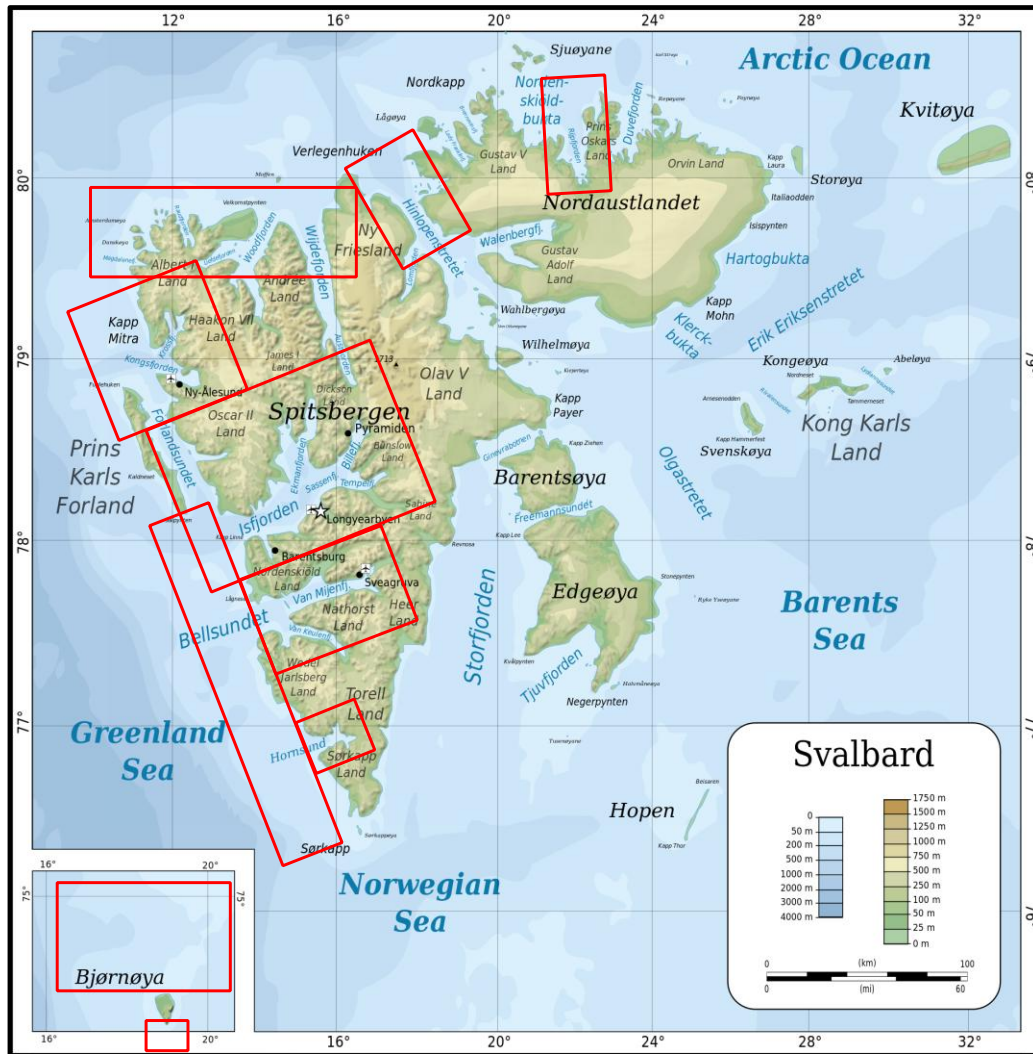


Fig. 2. Research regions in the Svalbard fjords and coastal regions.

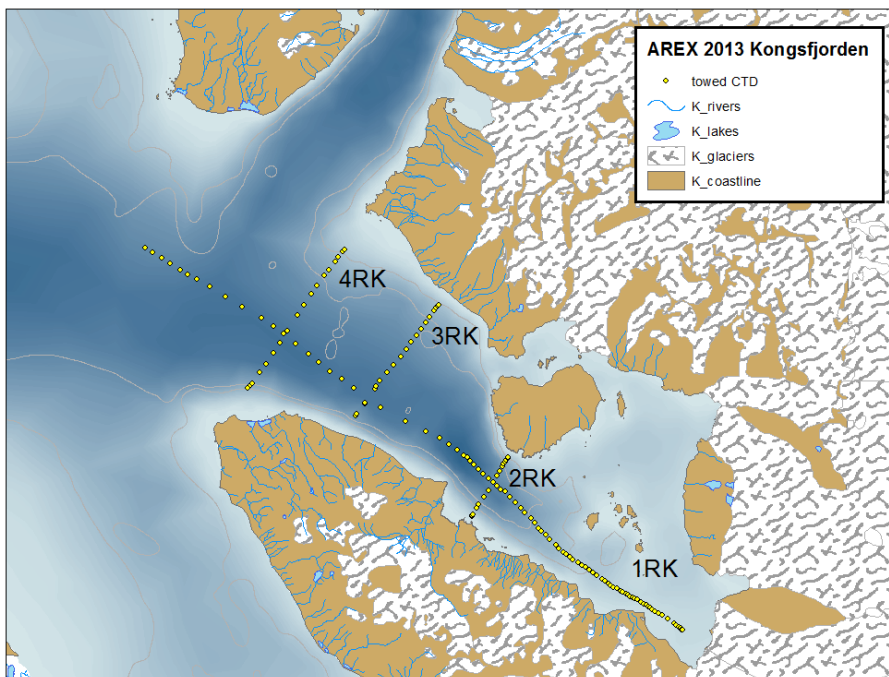


Fig. 3. Planned CTD sections in Kongsfjorden

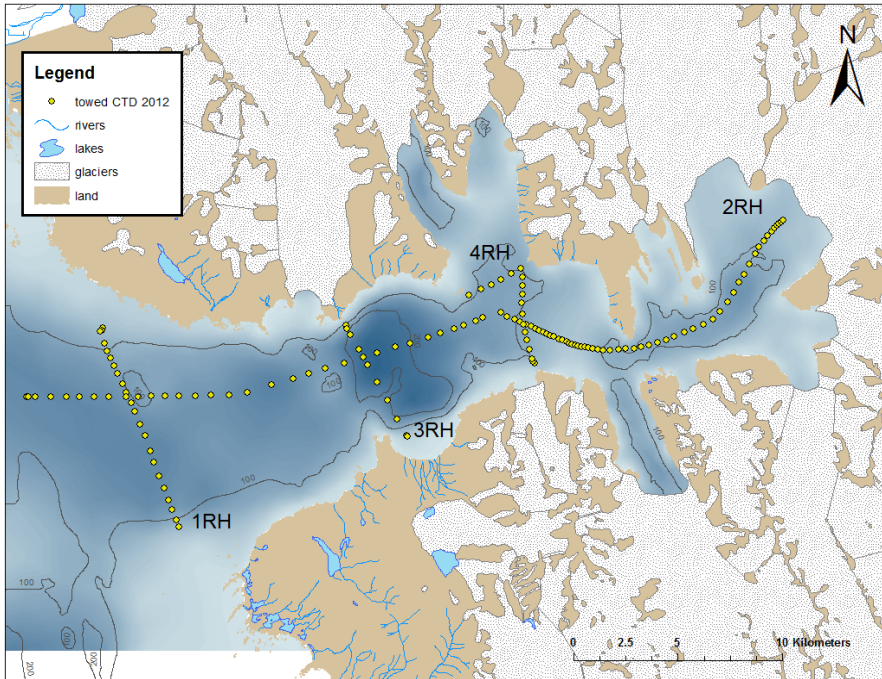


Fig 4. Planed CTD sections in Hornsund

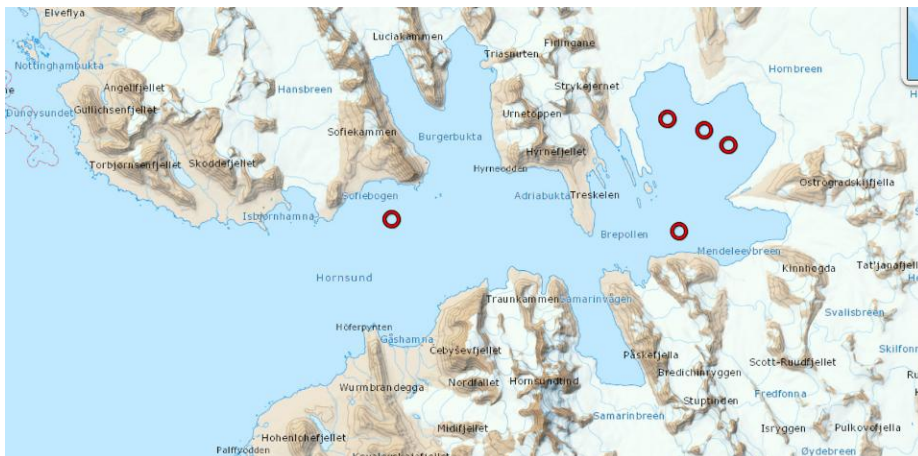


Fig 5. Planned stations of benthos samples in Hornsund

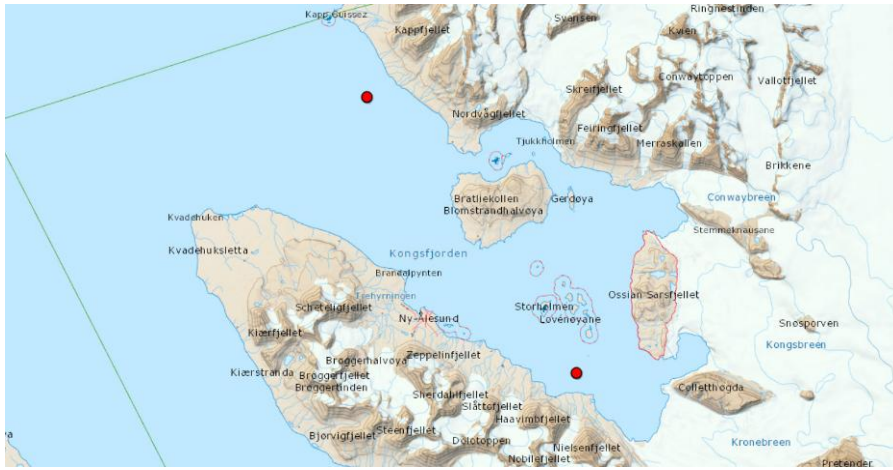


Fig 6. Planned stations of benthos samples in Kongsfiorden

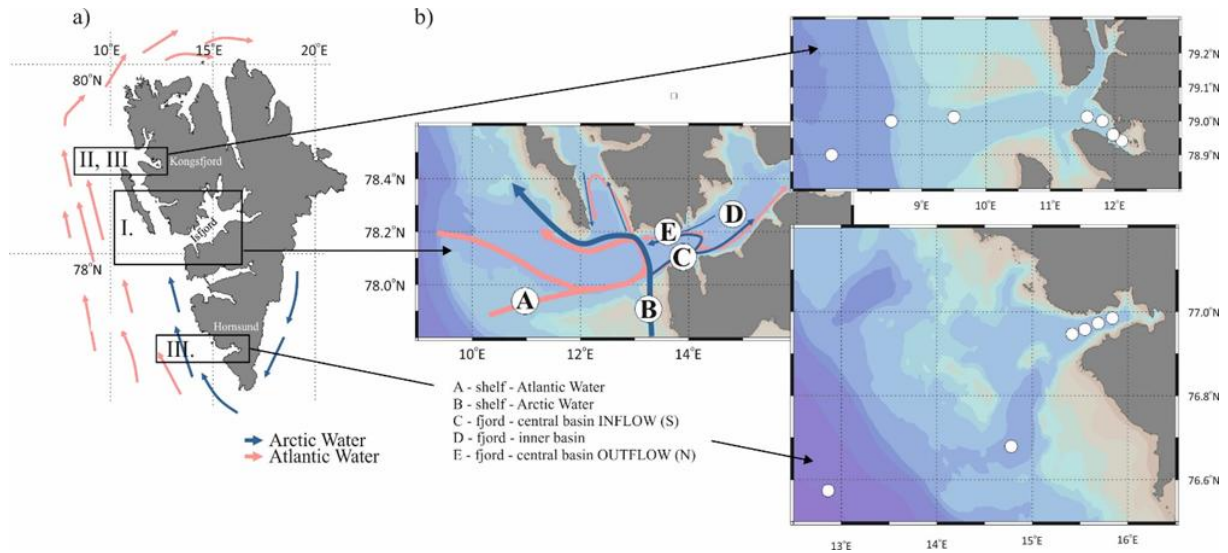


Fig 7. Overview map of the study area of Tax4Fun research project



Fig 8. Planned region of paleoceanographic study at the Jan Mayen region

Positions of planned paleoceanographic stations in the Jan Mayen area:

Station	Lat	Long
2019JM03GCBox	71° 2.690'N	9° 52.219'W
2019JM04GCBox	70° 59.163'N	10° 36.478'W
2019JM05GCBox	70° 51.874'N	10° 20.924'W
2019JM06GCBox	71° 7.362'N	14° 45.805'W
2019JM07GCBox	70° 41.118'N	9° 1.751'W
2019JM08GCBox	70° 45.182'N	8° 39.341'W
2019JM09GCBox	70° 36.197'N	8° 37.858'W

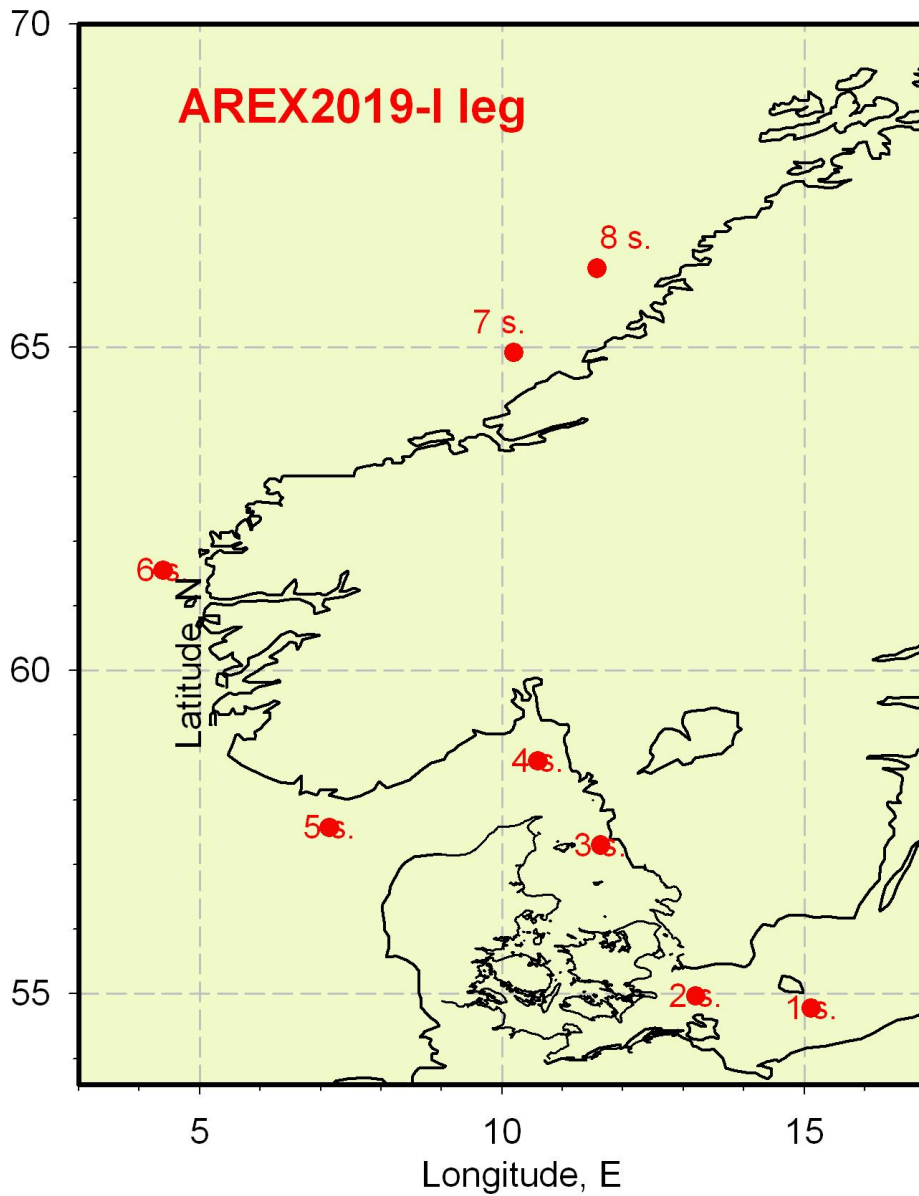


Fig. 9. Planed position of the surface water sampling during the AREX2019 cruise.

Planed positions of the surface water sampling in Norwegian waters:

5 surf	57 34.1' N	007 08.6' E
6 surf	61 19.5' N	004 01.4' E
7 surf	64 32.9' N	010 06.9' E
8 surf	66 07.7' N	011 20.5' E